

**THE ENTERPRISE PROCESS AUTOMATION PLATFORM.**

# Primus

## PROCESS ENGINE

Primus is a state-of-the-art process automation platform. It is designed and engineered to handle highly demanding enterprise automation jobs in terms of volumes, complexity and speed, with the necessary reliability for a critical production environment. Primus is deployment agnostic and therefore runs on-premise as well as a service in the cloud.

Primus provides a flexible infrastructure to combine various technologies and robotic components to achieve high automation rates (Robotic Process Automation).

With Primus, simple and intuitive graphical interface process automation projects are put into production in record times. Things may start small but with Primus there is never a worry about volume ramp-up; the unlimited scalability of Primus makes bottlenecks a thing of the past. And its control features give you instant and transparent information about each single work item in each single process step - Compliance is simply built in.

Automate your business the smart and cost-effective way with the Primus Process Engine!



**Primus**  
PROCESS ENGINE

### Future Proof for the Enterprise

Primus is a cloud-ready, high-volume, high performance, rules-based workflow platform. It provides unprecedented flexibility in designing, changing, running and monitoring administrative processes. Built by experts to match the high integration standards of demanding IT departments. Primus is based on a modern data and document model that is completely transaction safe. All communication between services and databases is securely encrypted and uses standard protocols.

### Scalable Service Oriented Architecture

The service oriented and modular architecture (SOA) of Primus is extremely scalable and allows for the application of unlimited processing/CPU power. Smart load balancing can be controlled via simple parameters. With Primus the clever usage of server power makes processing bottlenecks a thing of the past; processes with more than several 100,000 items per day are easily handled by Primus. And the SOA architecture with RESTful services facilitates quick and powerful integration with 3rd party systems.

### Straightforward Design and Visualization

Primus processes are built simply by creating a graphical process representation with drag&drop actions according to the Business Process Model and Notation (BPMN) standard. BPMN helps to cut implementation times by facilitating communications between experts, subject specialist and users.

### Open for Best of Breed

The straightforward «object-insert» approach allows for the rapid deployment of market or project specific technologies through Primus activities, thus providing great flexibility to tailor processes exactly to the customer's requirements.

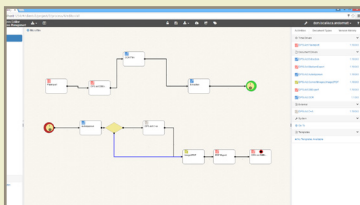
### Multi-talented out-of-the Box

Primus is fully multi-client and multi-process capable. Unstructured data/documents processed can be maintained in multiple formats (e.g. msg, txt, pdf). And Primus is also ready for a multi-lingual environment.

### Full Control and Compliance

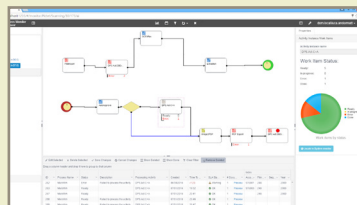
Primus keeps track of everything and provides a complete chain of custody for each work item processed. The data collected provide a valuable resource for process analytics and are the foundation for continuous process improvement.

Steer and control **Primus** by using its three tools from anywhere, through any web-enabled device (HTML GUI).



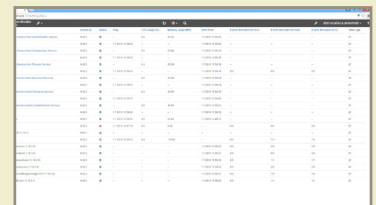
### Primus Process Editor

lets you graphically design the processes and provides activity management according to the BPMN standard.



### Primus Process Monitor

gives you an operational view on processes during production and monitors service levels (SLA).



### Primus System Monitor

provides a technical view of services running and the current overall state of the system, messages, actual throughput per service and per activity.

### Primus is the essential process automation platform for...

any organization that deals with high volumes of data and/or documents; e.g. Financial Services, Government, Health Care and their respective Service Centers or Outsourcing Partners.

